

Trust in Me

Kerrie Neu

♩ = 65

Voice

Re - mem - ber when you were a little child, _____ and you were
Now you're grown and not a little child. _____ Yet you are

Piano

5

frightened by the dark-ness in the night. _____ With fearful heart you laid u - pon your bed, _____ then pulled the
frightened by a dif - ferent kind of night. _____ With fearful heart you still lay on your bed _____ and search for

Pno.

9

blank - et up to co - ver up your head. _____ Re - member how a thought came to your mind _____ to pray for
an - swers to the questions in your head. _____ Lis - ten to the thoughts sent to your mind _____ to pray for

Pno.

©2010 Kerrie Neu

Permission is granted to copy for non-commercial use only
Visit www.neusounds.com for more music by Kerrie Neu

Trust in Me

2
13

help of a Heav'n-ly kind. You asked me to be with you to be strong. I was
help of a Heav'n-ly kind. Ask me to be with you to be strong. I'll be

Pno.

17

there. I'll al-ways come. So trust in me and take my hand. Knowhow
there. I'll al-ways come.

Pno.

21

carefully I've de-signed your plan. A plan for good, and filledwith love, though maybe

Pno.

25

dif - rent than you had dreamed of. Fear not my child what you can - not

Pno.

Trust in Me

28 1. 3

— see. — Just take my hand — and trust in me.

Pno.

28 1.

32 2. *slower* *p*

Have faith to know I love you, and I will do what's best. En -

Pno.

32 2. *slower* *p*

slower *p*

35 *a tempo*

trust your loved ones in my care. In me, they will be blessed. — Trust in

Pno.

35 *a tempo*

a tempo

39 *f*

me — and take my — hand. — Know how care-ful-ly I've de-signed — your

Pno.

39 *f*

f

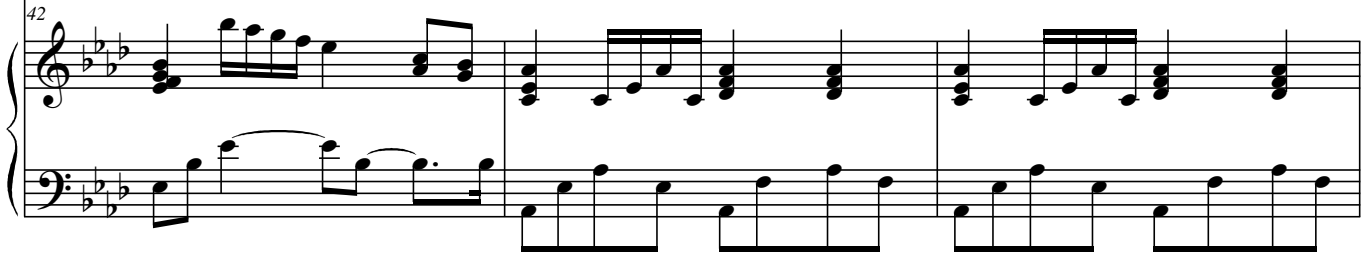
Trust in Me

4
42



plan. _____ A plan for good, _____ and filled with love, _____ though may-be

Pno.



45



dif - frent than you had dreamed _____ of. _____ Fear not my child what you can - not

Pno.



48



_____ see. _____ Just take my hand _____ and trust in me. Fear not my child what you can-not _____

Pno.



52



_____ see. _____ Just take my hand _____ and trust in me. *rit.*

Pno.

